



# CURTISS - WRIGHT

## CAPABILITIES

Exlar®, a brand of Curtiss-Wright, has been in operation in Chanhassen, Minnesota since 1990. The Ground and Naval Defense (GaND) business unit of Exlar Automation manufactures COTS and mCOTS electromechanical linear and rotary actuators that cover a wide range of motion applications for the defense industry.

Utilizing roller screw technology and integrated brushless servo motors, Exlar actuators offer clean, fast, and accurate control over a wide range of force, speed, and positioning. With continuous force ratings in excess of 40,000 pounds (177,929 N) and linear speeds exceeding 60 inches per second (1.5 m/s), our actuators are built to last and guarantee performance and repeatability over the life of the product.

Advanced military applications demand solutions that can withstand harsh environmental conditions in a fail safe and reliable manner. Our comprehensive offering of commercial off-the-shelf technology enables a baseline technical solution that can be enhanced through modifications to attain targeted specifications for military applications.

Curtiss-Wright's Exlar COTs and mCOTs actuators — and our pedigree of developing solutions specifically for Naval Defense applications — makes us your preferred partner for developing products with an increased technical readiness level, reduced program risk, and lower development cost.

## Exlar Automation

- 📍 18400 West 77th Street  
Chanhassen, MN 55317
- ☎ 952.500.6200
- 🌐 [cw-actuation.com/en-gb/gand-products](http://cw-actuation.com/en-gb/gand-products)
- 🏢 Curtiss-Wright Actuation Division

## PRODUCTS

Compact Linear Actuation

Compact Rotary Actuation

Heavy Lift Rotary Actuation

High Force Linear Actuation

Intelligent Drive | Motor | Actuation

# EXLAR CAPABILITIES

## RESOURCES

The Ground and Naval Defense (GaND) business segment is part of the Curtiss-Wright Actuation Division.

- The Actuation Division has the following manufacturing facilities:
  - Chanhassen, MN: 108,000 ft<sup>2</sup>
  - Shelby, NC: 186,000 ft<sup>2</sup>
  - Sales Offices Worldwide
- Certifications:
  - Chanhassen, MN: ISO 9001-2015
  - Shelby, NC: ISO 14001-2015
- People:
  - Chanhassen, MN: 100+ Employees
  - Shelby, NC: 250+ Employees

## EMA BENEFITS

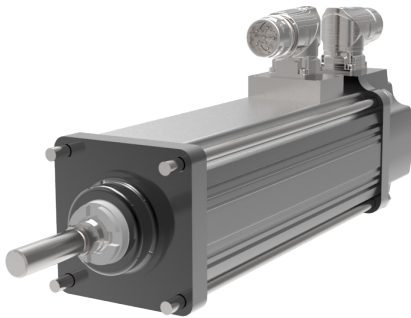
- As Compared to Fluid Power
  - Higher Efficiency
  - More Sustainable
  - Lower Life-Cycle Cost
  - Higher Precision & Accuracy

## DESIGN COLLABORATION

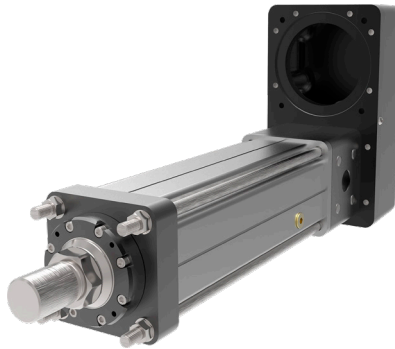
- Ground & Naval Defense
  - Engineering expertise to aid adoption of electric actuation
  - Design verification and validation testing capabilities
  - Risk mitigation to achieve program objectives

## NAVAL APPLICATIONS

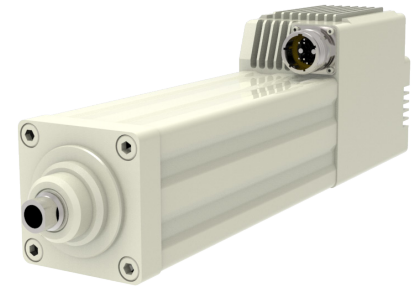
- Guaranteed Performance
  - Hatches, Doors, and Bays
  - Towed Arrays
  - Carrier Flight Deck Operations
  - Platform & Barrier Lifts
  - Position Turrets
  - Pump & Valve Controls
  - Weapons Handling Systems



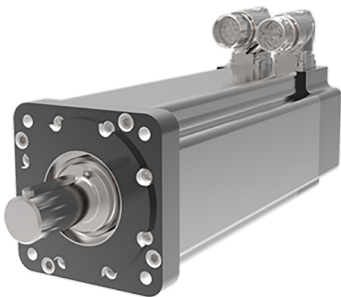
Linear Integrated Motor/Actuator



Compact Linear Actuator



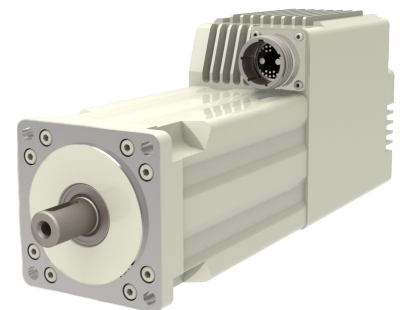
Intelligent Linear Drive Motor/Actuator



Compact Rotary Actuator



Heavy Lift Rotary Actuator



Intelligent Linear Drive Motor/Actuator