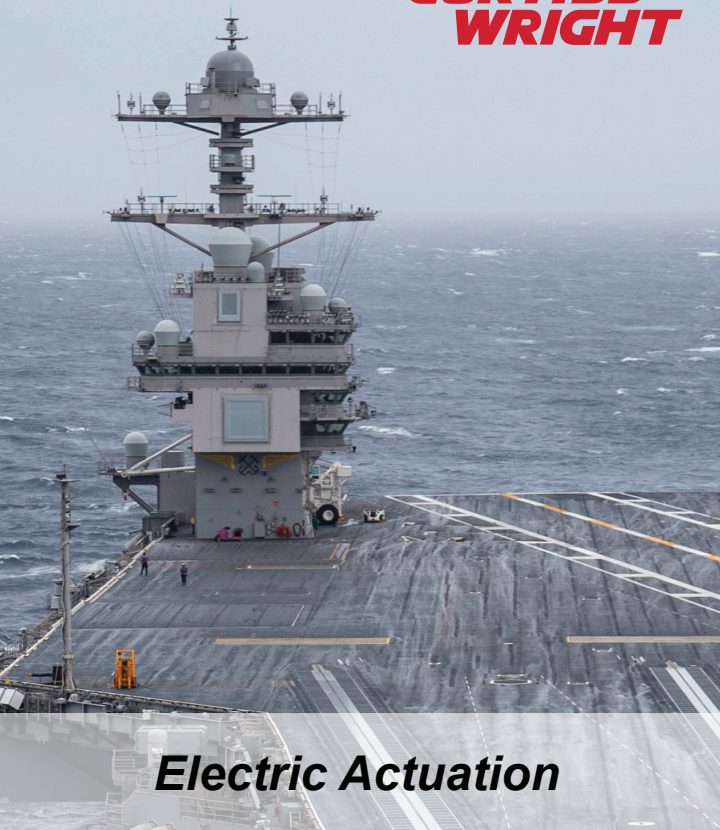


**CURTISS -  
WRIGHT**



## ***Electric Actuation***

### **The Exlar<sup>®</sup> Advantage**

**Rugged** – High force and high performance in extreme conditions

**Reliable & Proven** – Designed and built in the U.S. with 30+ years' experience in must-not-fail applications

**Adaptable** – Engineering expertise to aid adoption of electric actuation and available with numerous COTS and modified COTS offerings

**Total Cost of Ownership (TCO)** – Energy efficient and less costly to support.



GaND Products

**EXLAR<sup>®</sup>**

18400 W. 77th St., Chanhassen, MN 55317 | 952-500-6200

# Naval Defense Actuation

*Trusted Partners of the Military*



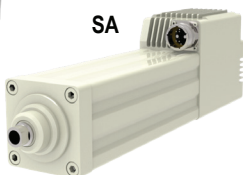
## COTS Solutions



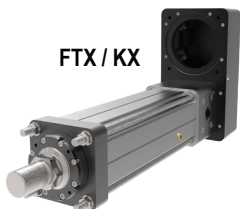
Exlar  
Products



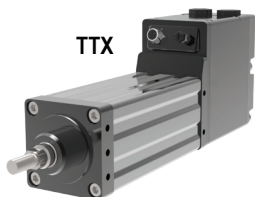
GTX



SA



FTX/KX



TTX

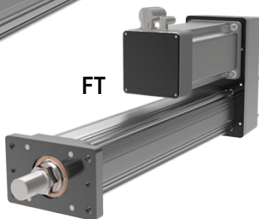
## Modified COTS Solutions



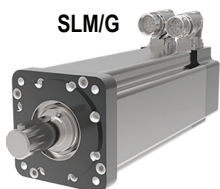
Engineering  
Services



GSX



FT



SLM/G



Tritex II

**Power | Precision | Proven**  
[www.exlar.com](http://www.exlar.com)